

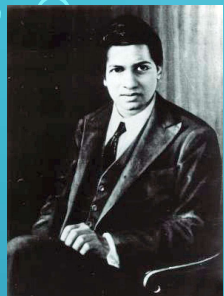
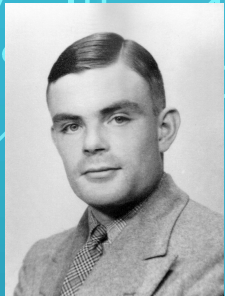
House Mathematical Art Competition

SUBMIT A PIECE OF ARTWORK WHICH FALLS INTO ONE OF THE CATEGORIES BELOW BY 9TH SEPTEMBER 2022

1. Portraiture

2. Female Excellence in Mathematics

3. Mathematical Art



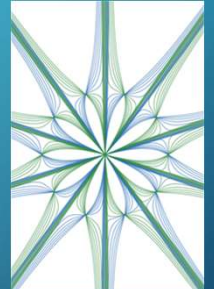
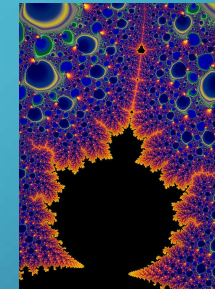
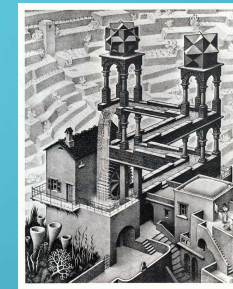
Sophie Germain
(1776-1831)
Mathematician

A challenge was issued in Napoleonic France to explain why sand on small glass plates settled into patterns when the glass was vibrated. The only entrant was Sophie Germain. It took her six years, but she eventually won with a pioneering paper on elasticity. Despite her work, she was never accepted by the male establishment of the time.



Katherine Johnson

Katherine Johnson was a brilliant mathematician who worked for NASA. She was one of the first African American women to work in a field of science and technology. Her work was instrumental in the success of the Apollo space program.



A traditional portrait of a famous mathematician.

Be creative! This category is a celebration of female mathematicians. You could include information about their work alongside a more traditional piece of artwork.

A piece of artwork inspired by a mathematical concept.

PRIZES TO BE AWARDED IN EACH OF THE KEY STAGES AND ARTWORK WILL BE DISPLAYED AROUND THE SCHOOL.

SUBMISSIONS CAN BE IN ANY MEDIUM.

EMAIL M.JONES@KINGSHIGHWARWICK.CO.UK AND S.MILSOM@KINGSHIGHWARWICK.CO.UK OR HAND INTO THE MATHS OFFICE. MAKE SURE YOU INCLUDE YOUR NAME, HOUSE AND WHICH CATEGORY YOU ARE ENTERING ALONG WITH A BRIEF DESCRIPTION OF YOUR ARTWORK.